

1. **How to change Data Execution Prevention (DEP) settings in Windows 7?**

Data Execution Prevention (DEP) is a feature that protects our system from viruses and other security threats. The Windows constantly monitors the programs running on our system and closes them if they perform any malicious activity. But sometimes we want a certain program(s) to run even if the Windows alerts us that it is a malicious one.

To change Data Execution Prevention settings in Windows 7 follow these simple steps:

1) **Right click** on the **Computer** icon on your **Desktop** and select **Properties**.

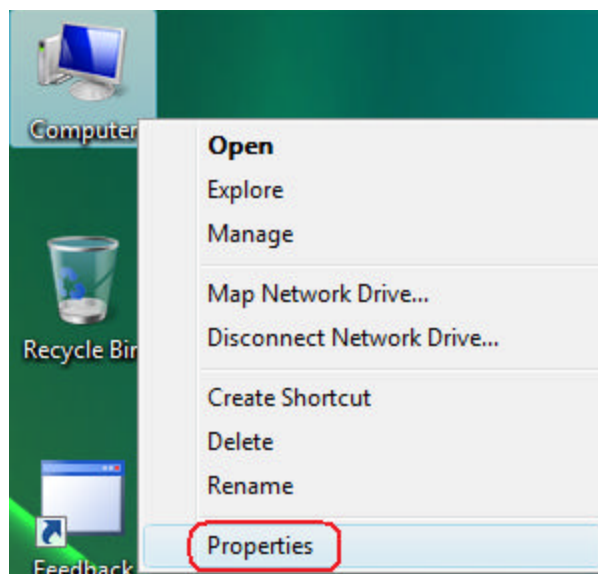


Figure 1

2) The **System** window opens now. Here click the **Advanced system settings** link in the **left pane** as highlighted below

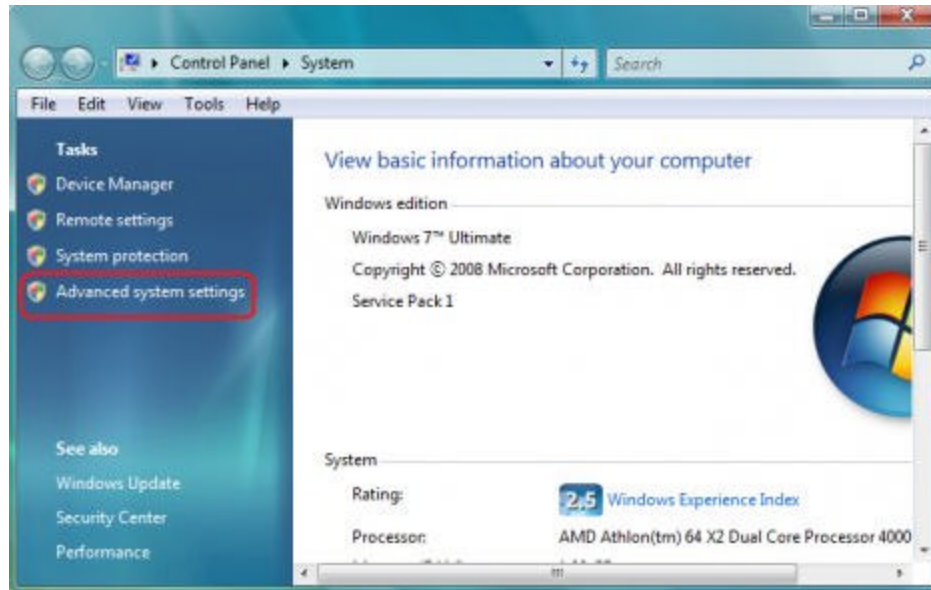


Figure 2

3) The **System Properties** window opens now. Here click the **Settings...** button under **Performance** section under **Advanced** tab

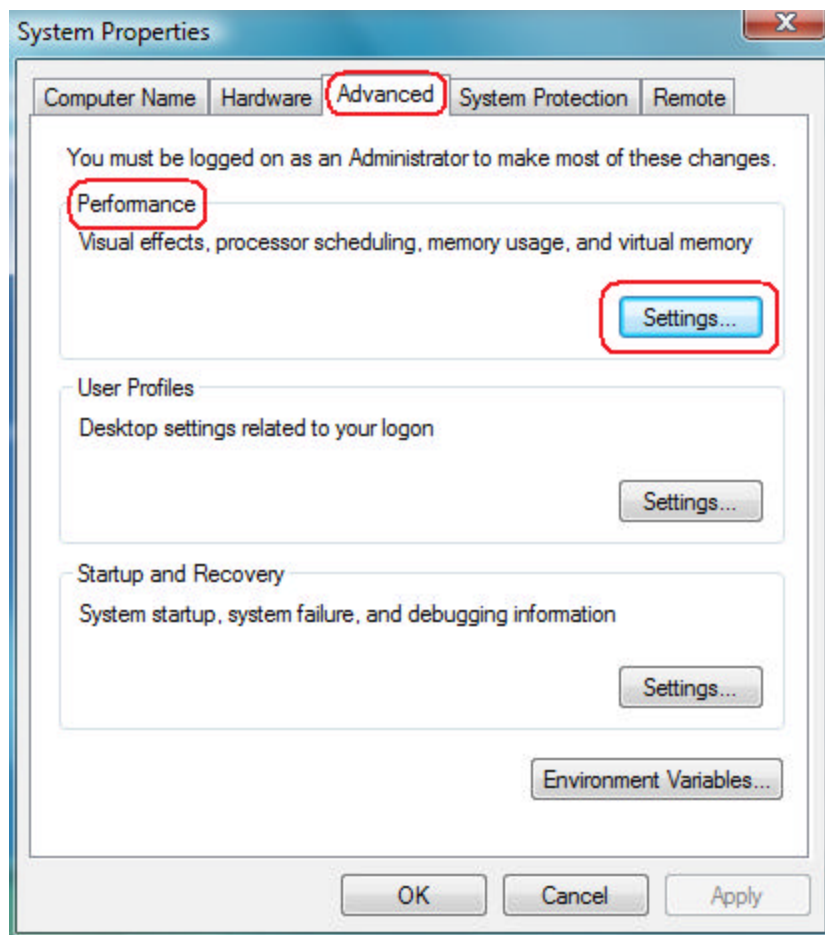


Figure 3

4) The **Performance Options** dialog box opens now. Here select **Data Execution Prevention** tab and then click on the dot **Turn on DEP for all programs and services except those I select** option and click **Add** button

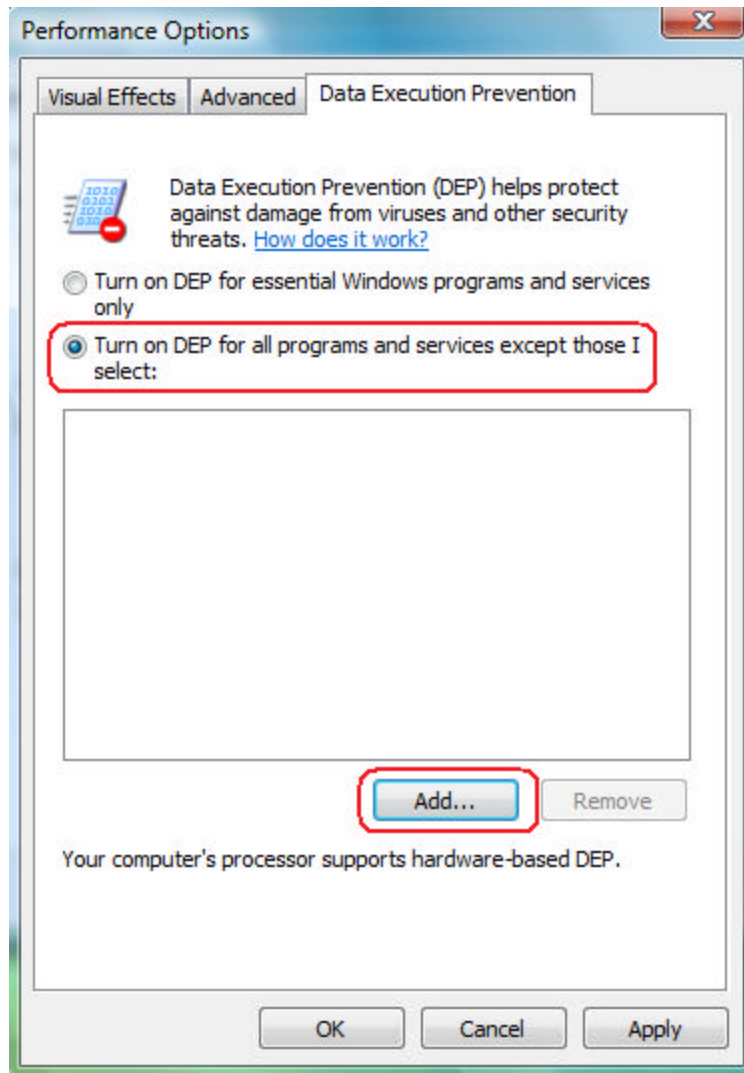


Figure 4

5) Now select the **Executable file** that you want to **add** and click **Open** button

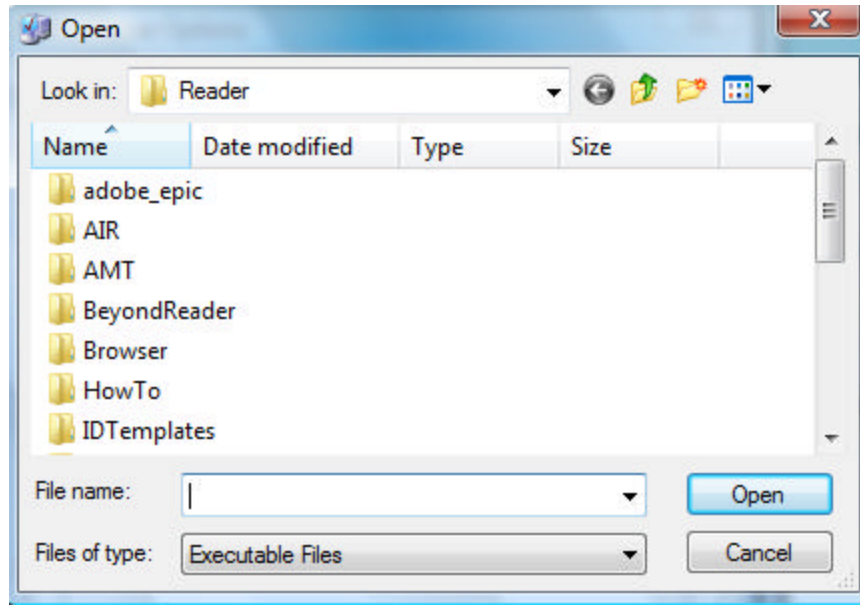


Figure 5

Note: If you try to add an executable file that for which DEP cannot be turned off then you will receive a warning as shown below.

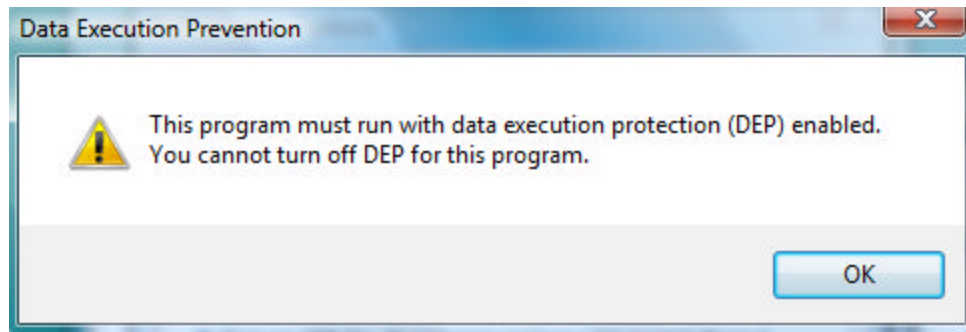


Figure 6

- 6) Similarly to **remove** an executable file from the list select that file and click **Remove** button.
- 7) Click **Apply** and then **OK** button in the **Performance options** window
- 8) Click **OK** button in **System Properties** window
- 9) Close **System** window.